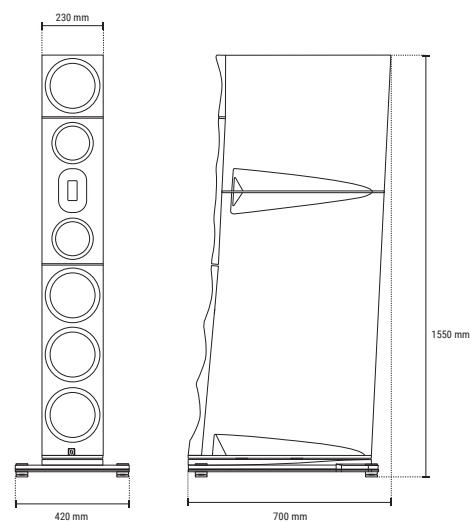
 BORRESEN

The loudspeaker



If you go for power and refinement, you will definitely love how the BØRRESEN 05 plays your music. Experience how even the smallest details in the music flows seamlessly and with superior precision. Notes from tweeter, midrange and bass units join together in an unprecedented harmony.

How do one explain music? you don't - you just have to listen yourself!



BØRRESEN 05
2,5 way floorstanding loudspeaker



- a quantum leap in technology

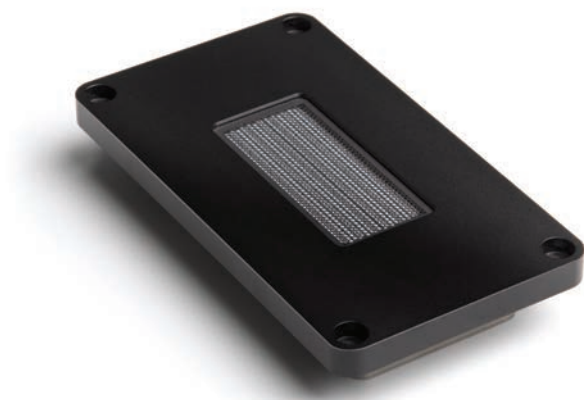


Michael Børresen has designed a series of loudspeakers consisting of four models.

The following will give you an insight into their

spearheading technical innovations that represent a real quantum leap in loudspeaker technology.

We are convinced that these loudspeakers will usher in a new dimension in acoustic refinement and catapult BØRRESEN loudspeakers to the top of the line.

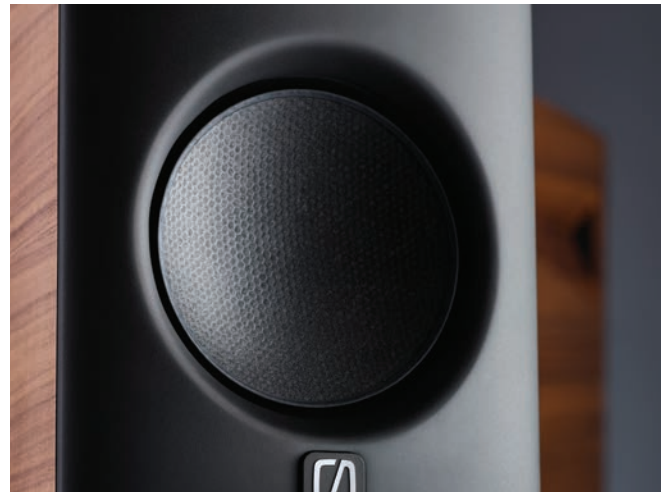


Tweeter:

The closed ribbon tweeter is an entirely new technical development. Elaborate finite element methods have been applied to linearize and optimize the magnetic flux field, to facilitate piston movement and to ensure high efficiency and outstanding linearity.

The efficiency of this closed ribbon tweeter amounts to an exceptional 94dB and operates from approximately 2.5 KHz upwards. The moving mass is extremely low at 0.01 grams. The totally concealed tweeter has the capacity

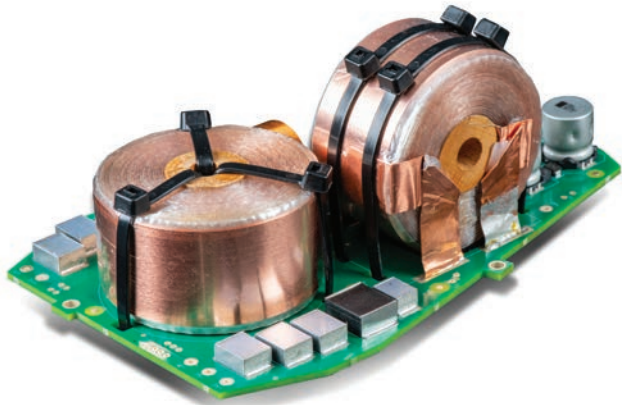
to operate at an incredible speed, which is an absolute pre-requisite to unlocking the most subtle and refined sound details of any kind of music. The enormous robustness of this tweeter allows it to handle extremely high transient peaks without any ear fatiguing breakups. No transformers are being used.



Bass drivers:

The BØRRESEN membrane consists of a composite of two layers of very thin carbon on both sides of a 4 mm Nomex honeycomb core. This composite structure - similar to the one used in formula 1 type of racing cars - provides the ultimate combination of stiffness to weight ratio. The membrane boasts extreme stifles with an exceptionally low weight of only 5.5 grams. This low weight allows a very high acceleration factor in the driver, resulting in both outstanding resolution and higher efficiency.

The BØRRESEN magnet system (page 6-7) is breaking new ground. Its unique, innovative and unprecedented technological design makes it stand out from anything else on the loudspeaker market.



Crossover:

BØRRESEN loudspeakers are fitted with a serial crossover configuration. The reason for this is that the drivers share the very same flow of electric current in the crossover region. As a result, the electric current is phase-locked over the crossover region. Unlike standard parallel filtering, where each driver receives its own frequency and phase content, the new serial filters work by diverting out-of-band currents around the current flows, thus creating a much more coherent system. This unrivaled and innovative technological approach takes your music into a new echelon of acoustic delight.

For the crossover filter, we went to great lengths to source the very best and most sophisticated state-of-the-art components. The coils are foil types wound with paper isolation and impregnated with resin under vacuum to make them mechanically extremely solid and stable.

For crossover capacitors, we use arrays of small military spec stack-foil types. They have the best mechanical stability and lowest induction of any type of capacitor on the market (and they sound wonderful, too).

For tweeter attenuation resistors, we use metal strip types since they have, by far, the abso-

lutely lowest noise figures and additionally, a very low thermal variation.



Cabinets:

The cabinets are heavily braced, block milled, compressed wood structures, beautifully veneered in walnut and fitted with solid walnut inserts. They follow the best of Danish furniture design traditions paired with the stylish shapes that were initially created by the late Franco Serbelin from Sonos Faber.

The tweeter section is vented to balance out the build-up of air pressure. The bass sections consist of tuned ports calibrated for musically relevant frequencies.

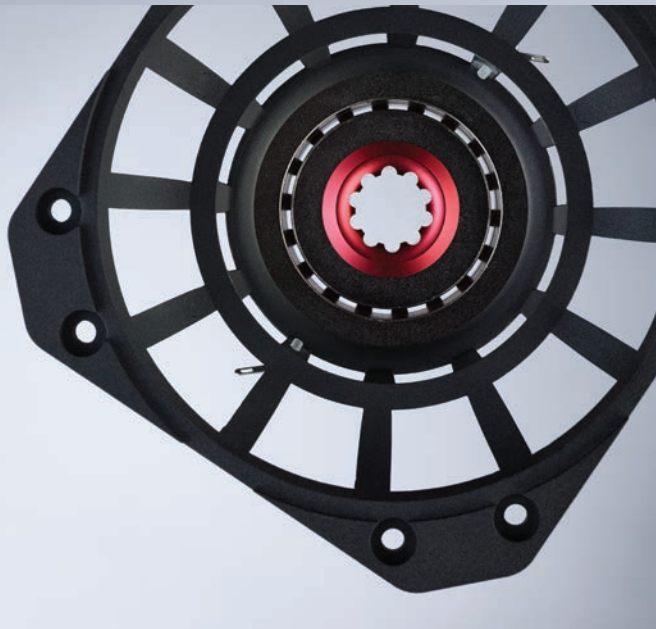


Feet:

The feet and stands are fitted with layers of Ansuz Darkz resonance controls.

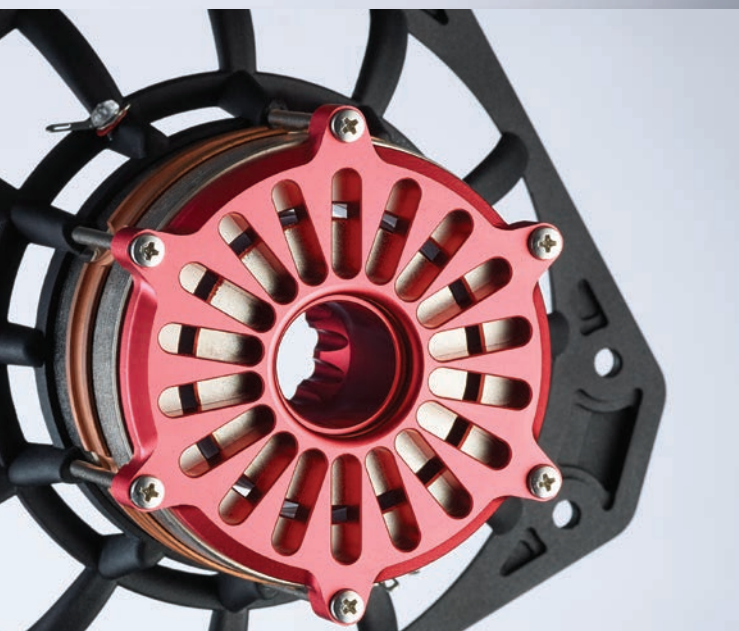
- if there's a secret to innovation...

it will be something like curiosity, ingenuity, persistence and a lot of hard work!



Since the invention of the loudspeaker driver, the fundamental structure of magnet systems has not changed. Iron has been used to concentrate the magnetic flux in a narrow gap where the voice-coil is located. Iron is suited for the concentration of flux, but also poses some challenging issues when it comes to the voice-coil parameters. These parameters also change with the position of the voice-coil, creating considerable iron distortion.

The BØRRESEN magnet motor is breaking new ground here. It is uniquely designed without the use of any iron. In the BØRRESEN magnet motor, 4 opposing neodymium ring-magnets are used to squeeze the flux lines together over two solid copper discs which now act like pole pieces.

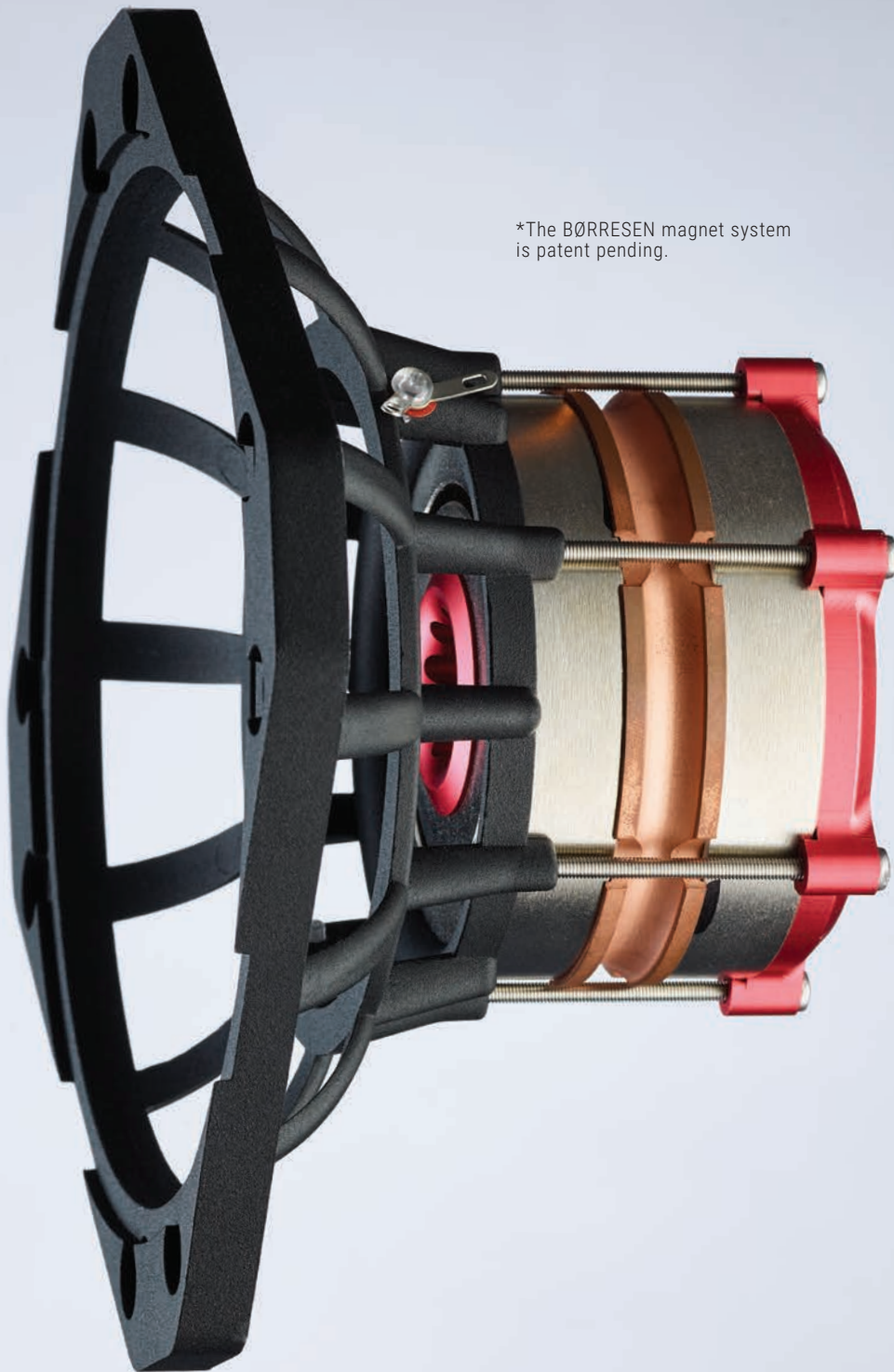


The BØRRESEN magnet system has a high flux of 1.1 Tesla. The solid copper pole rings act as very effective heat sinks. This endows the loudspeaker driver with a very high power handling capacity. The copper pole rings also reduce voice-coil inductance to an exceptionally low value of 0.04 MH (less than 10% of regular standard drivers).

The extremely low induction provides the driver with some very desirable attributes that enormously elevate the quality of acoustic performance. A much lower induction means a much faster driver, with no lag. This impacts the overall loudspeaker performance which now becomes much more refined and very detailed. Lower induction also causes less resonance impedance variation, which means less phase angles and less impedance variation for the driving amplifier. Lower induction will also curb the impedance rise over system resonances.



B Ø R R E S E N



*The BØRRESEN magnet system is patent pending.

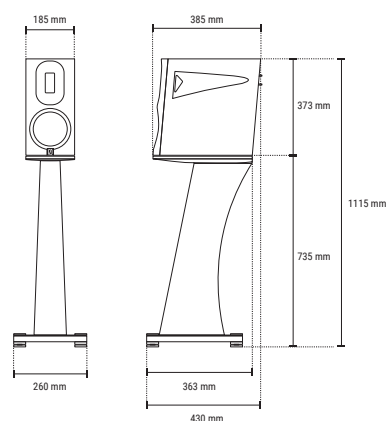
In terms of musicality, this will extremely foster a sound base that is less boomy but much

more pristine. Bass performance becomes very tight, well focused and more authentic.



This 2 way speaker will tell the story, playing with unbelievable power, musical richness and ease - the BØRRESEN 01.

The beautiful finish with walnut veneer is flawlessly crafted and flows lightly on its stand, making the 01 a desirable furniture in all modern homes.



BØRRESEN 01
2 way compact monitor loudspeaker



BØRRESEN 02

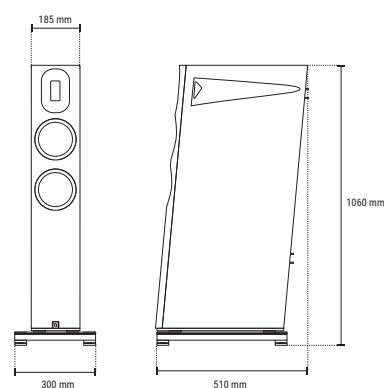
2,5 way floorstanding loudspeaker



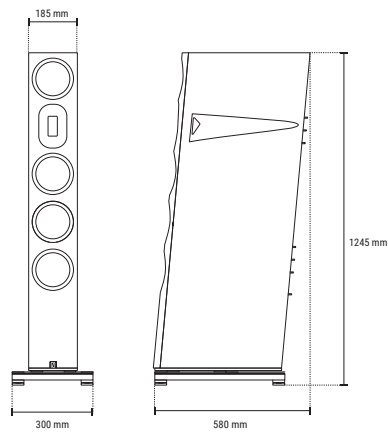
Every detail has been carefully applied, contributing with function and stunning musical performance.



In spite of its slim look, the 02 is capable of producing an impressive power and reproduction of the slightest musical details with calming and harmonious ease, showing the true potential of the BØRRESEN 02.







BØRRESEN 03
2,5 way floorstanding loudspeaker

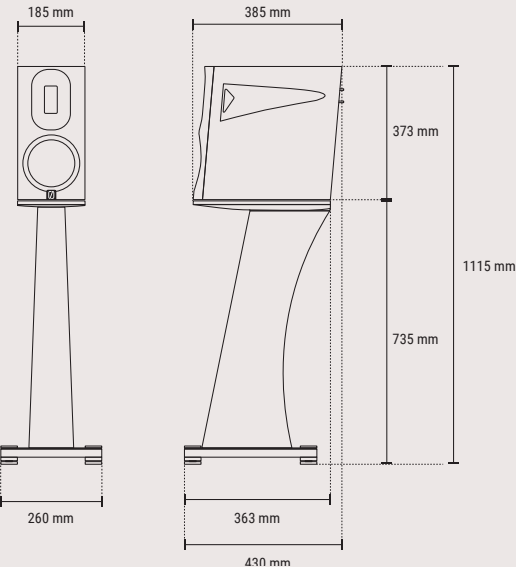


The BØRRESEN 03 has an almost unbelievable scale and incredible dynamic contrasts. It gives you a truly breathing realism of artists throwing you a private concert right in your listening room.

Specifications

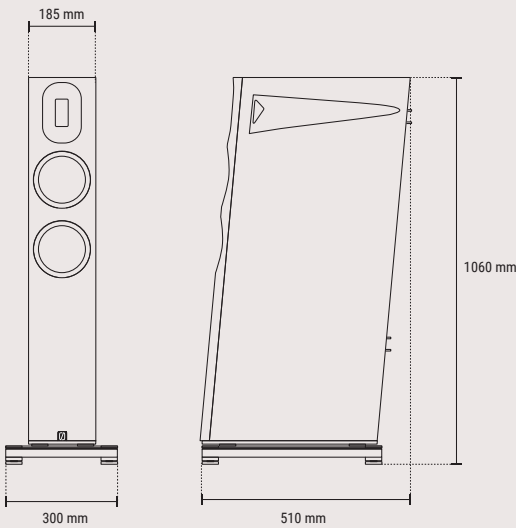
01

Frequency response	50Hz-50KHz
Sensitivity	86 dB/1W
Impedance	>6 ohms
Recommended Amplifier	>50W
Weight	18 kg



02

Frequency response	40Hz-50KHz
Sensitivity	88 dB/1W
Impedance	>4 ohms
Recommended Amplifier	>50W
Weight	30,5 kg

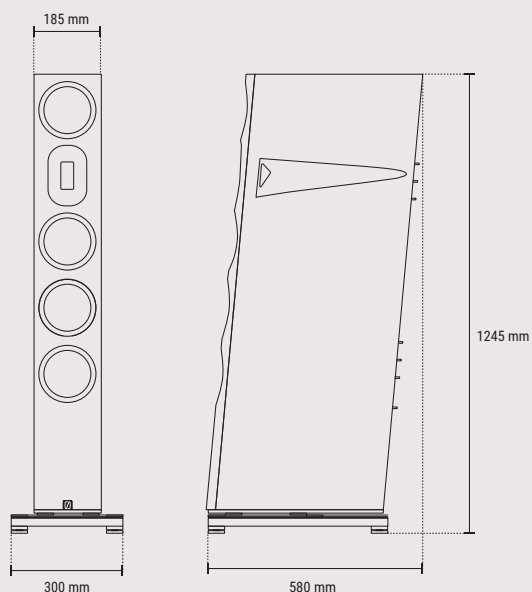


All models come in walnut veneer finish or custom color.
All models comes with built in Ansuz Darkz resonance controls with a choice of three different quality levels: C, D2 and D·TC.
Terminals are Banana type.



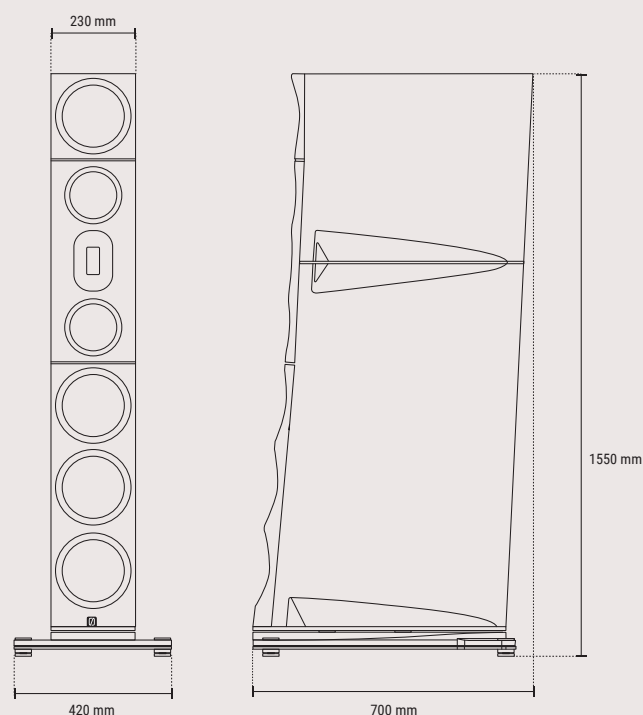
03

Frequency response	35Hz-50KHz
Sensitivity	89 dB/1W
Impedance	>4 ohms
Recommended Amplifier	>50W
Weight	38,0 kg



05

Frequency response	25Hz-50KHz
Sensitivity	90 dB/1W
Impedance	>4 ohms
Recommended Amplifier	>50W
Weight	75,0 kg





WWW.BORRESEN-ACOUSTICS.COM

BØRRESEN Loudspeakers are being designed, developed and produced in Denmark
By BØRRESEN ACOUSTICS.

© 2019 BØRRESEN ACOUSTICS • Photos by Søren Gammelmark Photography