



perspective.shifted



*On our 5th anniversary occasion
we aimed to create something
completely new with fresh looks,
different kind of materials, and eye
catching lines. These speakers
shouldn't have classical looks or
classical technical decisions. It should
be extravagant and represent our
vision in speaker's quality standards
for upcoming products and give
a leading tone to our speaker's design
as well as differ itself among others.
So don't mind bright makeup,
after all we are celebrating our
5th anniversary :)*

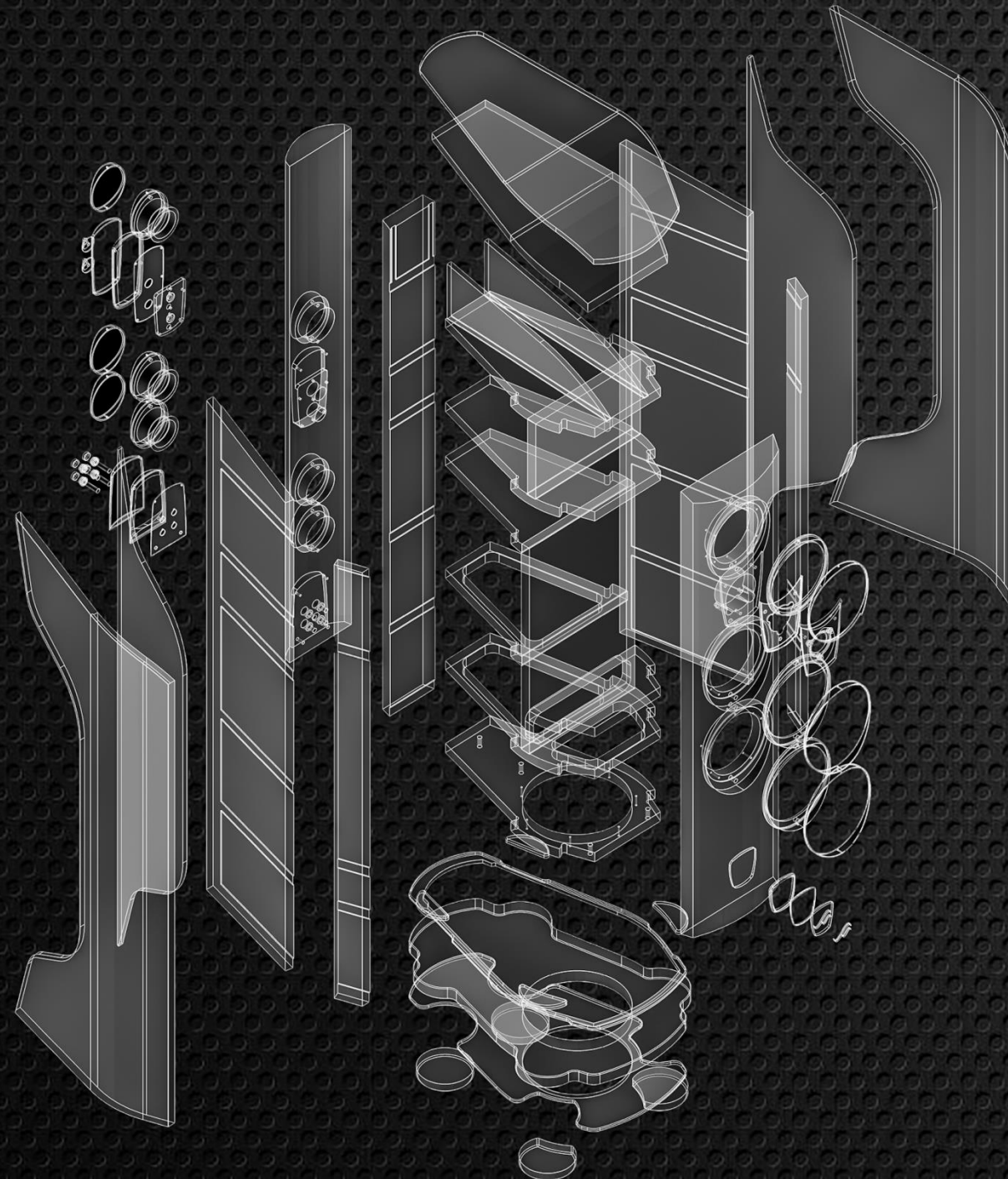
vantage
anniversary



Vantage anniversary edition speakers are designed to be much more rigid compared to all previous models AudioSolutions had produced. SBP plywood is used (Siberian Birch Plywood) for internal labyrinth structure as well as for sidewalls and curved top. Siberian Birch grows slower than simple birch, thus making it denser and tougher. Whole structure is modeled with best software available for resonance free surfaces. Actually our cabinet from SBP plywood results in structure which properties are better than aluminum. Due to many bent surfaces, plywood has some internal stress left which damps any resonances with ease. This technique of leaving some stress in materials was used by AudioSolutions from the very beginning. Step by step this technique was developed to what we manufacture today – 18 layers sandwich of thin rectangular orientated wood sheets along with some HDF glued together with three types of glue differing in hardness when cured.

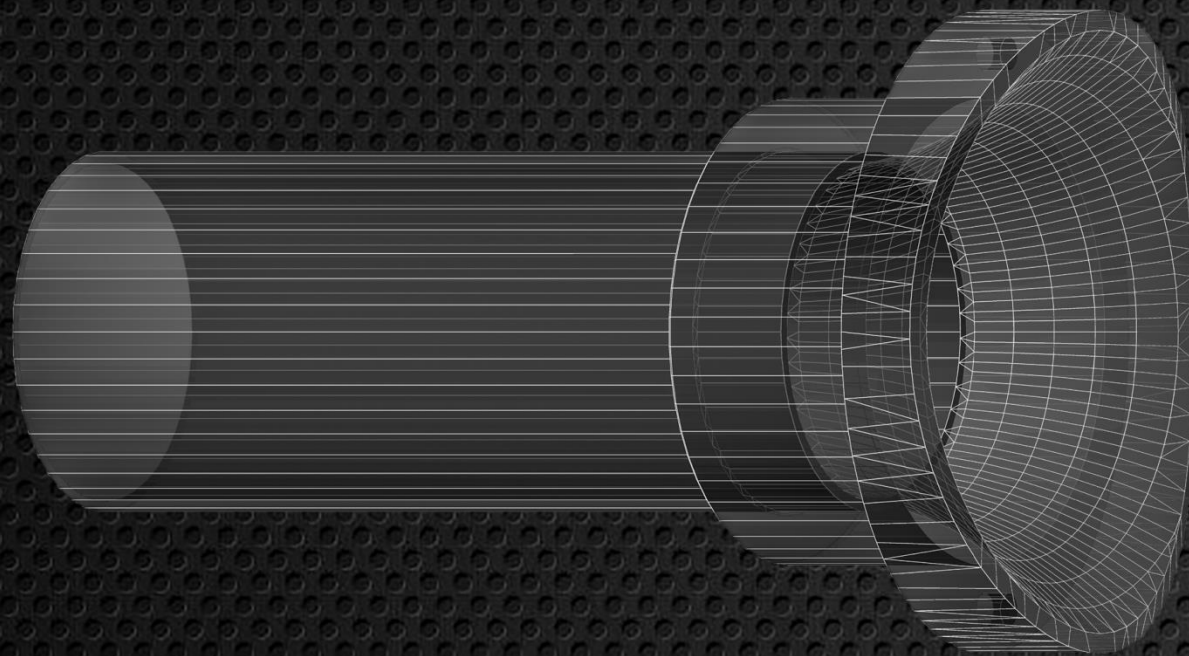


vantage
anniversary



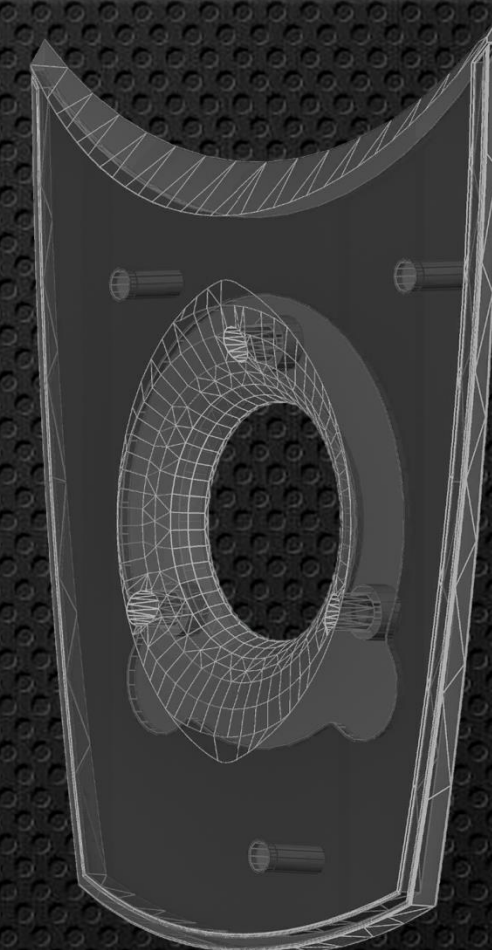
Most speakers have from 50 to 100 parts per speaker. To manufacture Vantage anniversary edition speakers we have to use 250 parts per speaker. Even then badge is assembled from five different tiny parts. Trying to avoid mess we showed only some parts in this breakdown diagram. It takes up to two months to manufacture and assemble one pair of Vantage anniversary series speakers.

vantage
anniversary



As a standard in AudioSolutions products mini horn is introduced to enhance tweeter performance by lowering distortions and raising efficiency in critical region.

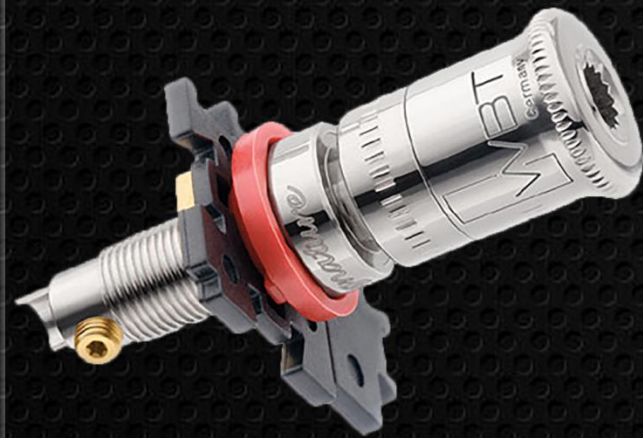
Fully customised enclosure ports is our pride. What might look like a usual port actually is a real masterpiece. Took us several months to design narrow (because of narrow back panel) but turbulence-free port allowing to "breathe" for two bass drivers and one big long-throw subwoofer located in speaker bottom. This port features aerodynamic properties similar to airplane allowing for air to travel at very high speeds with low friction and ofcourse at low noise.



vantage
anniversary



Vantage anniversary speakers are equipped with adjustable crossover allowing You to make level corrections depending on Your listening taste or simply to tame a room. Level corrections are limited to 2.5dB window preventing from tonal disbalance but making big impact if one needs to balance speakers>audio gear>room combo. Whole network is based only on extremely low inductance resistors meaning that only sound level will change when knob is turned.



WBT platinum

WBT connecting terminals is a standard in High-End audio equipment. We offer WBT signature line Platinum plated connectors with Gold plated copper alloy. Three part crimping system ensures extremely high contact pressure between connector and cable termination.

Adjustable crossover





A very special midrange drivers is used in Vantage anniversary which working range is 200-8000Hz

All anniversary edition models has beryllium tweeters loaded with Mini-Horn for enhanced performance.

Two SPC (Sliced Paper Cone) symetrical drive motor design woofers ensures fast and tight upper bass responce.

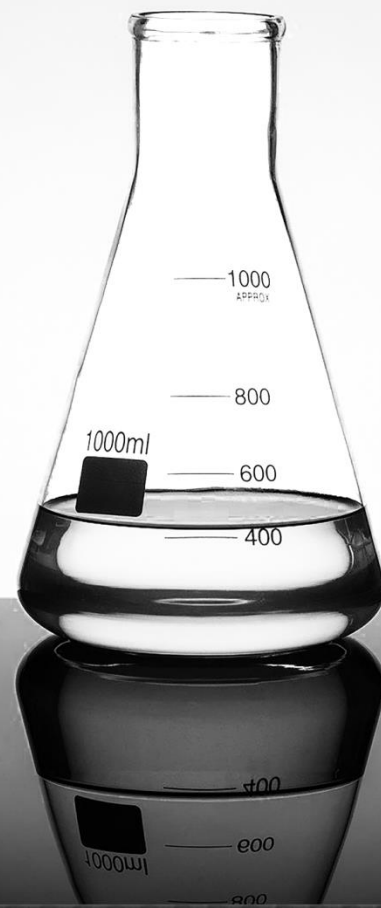
Every single model of Vantage is equipped with down firing subwoofer for ultimate listening experience.



Due to many bent surfaces, plywood has left some internal stress which damps any resonances with ease. This technique of leaving some stress in materials was used by AudioSolutions from the very beginning. Three types of glue differing in hardness when cured.

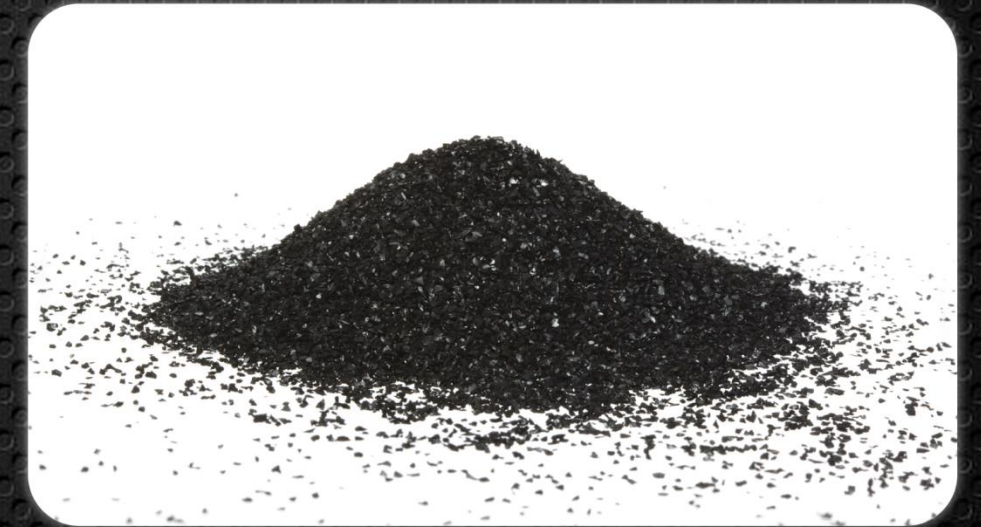
Depending on model, Vantage anniversary speakers have bi-amping or tri-amping binding posts available.

vantage
anniversary



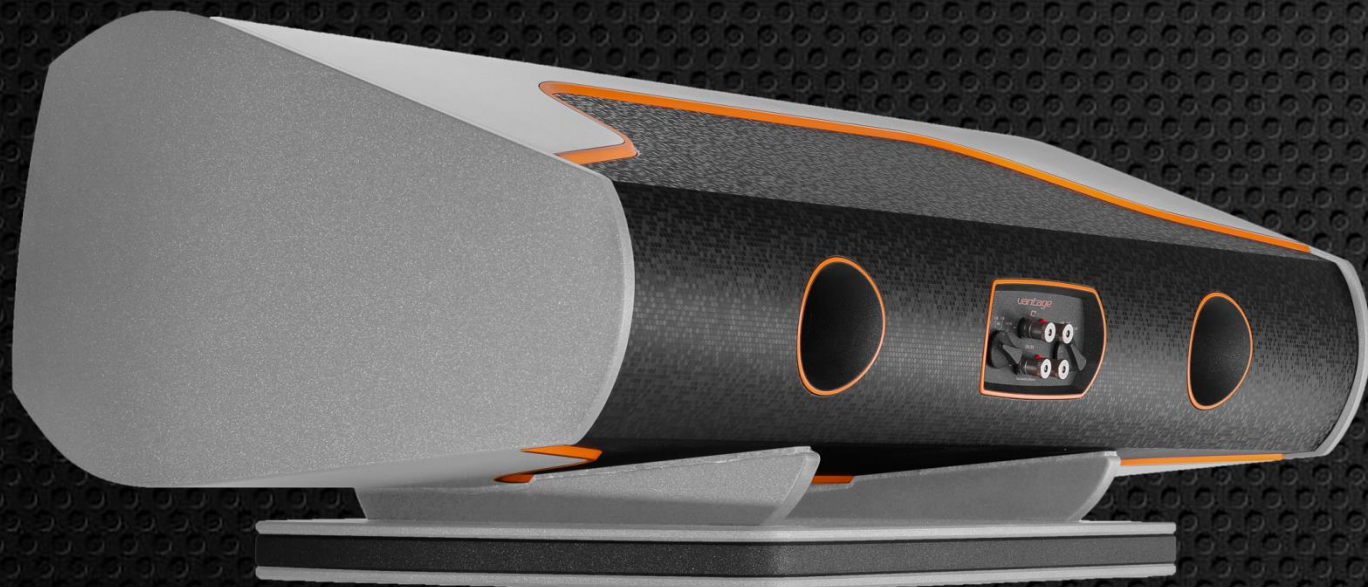
*Made in-house our unique top coat for decorative and protective purposes.
Manufactured from crushed stone powder and mixed with Polyurethane lacquer.
Such material is highly durable when cured providing perfect protective layer and
highly decorative surface.*

*Available in two colours. We offer dominating
Grey with Black 3D texture accent and Orange
outlines, also dominating White with Black 3D
texture accent and Orange outlines.*





Most of the times center channel speaker is underrated when choosing home-cinema system. Fact is that center channel is one of the most important components in system. Our flagship center channel speaker measures in 450 mm x 1191 mm x 610 mm and 75 kg for true cinema experience.



vantage c
anniversary



Bookshelf speaker which can't be used as bookshelf speaker because of down firing woofer. Sounds like a nonsense right? Some also might say having Vantage B is the same as having Vantage S because woofer size is the same. They will be wrong. While model B uses 8" woofer, model S uses 8" SUBwoofer. Also Vantage B lacks front firing woofers. I bet You are asking why model B was even born then if we have model S with more drivers? The answer is simple - Model B is much closer to point source and is devoted for environments where listening distance is critically short and one still seeks full scale full band performance. Flagship line of all AudioSolutions products. It naturally evolved from Vantage Classic speakers. The difference takes place not only in outer looks with completely fresh lines and outlines, but also manufacturing materials, technique and overall evolution in designing such complicated loudspeakers as a system of many components working in perfect harmony.



vantage b
anniversary



Vantage S (small) is smallest floorstander from whole collection. Speaker front edge reaches only 104cm height giving impression of really small speaker which later increases upwards and reaches 121cm height at back edge. Despite being really small and looking even smaller they do give some serious punch. We managed to push them to 112 dBC level at listening point 3m away from speakers in 55sq m room. And this was not achieved with technical sine wave but with music having some punchy tunes. Have to admit, speaker looking like most of middle sized floorstanders Vantage S not only plays music extremely natural but also plays it full scale and with full dynamic range.



vantage s
anniversary



Vantage M (medium) is middle sized speaker in the range. Created under the same philosophy as other products in the range - to have the same scale of sound among all sizes of speakers in range and have been devoted for special purposes. Like model B is devoted for short listening distances, or model S for normal distances but smaller rooms, Vantage M is devoted to be used in everyday environment with 30-100 sq.m room (bigger if acoustically treated). Despite being from the "big speaker breed" Vantage M looks and feels like smaller speaker in room due to clever design, but punches with attitude which reminds that they are surely from "big speakers breed".



vantage m
anniversary



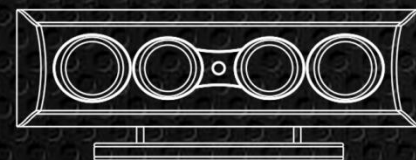
Vantage L (large) is biggest model in Vantage range. This model like its smaller brothers have the same sound scale, depth and tone. But don't make mistake - despite being tonally the same these speakers gives completely different impression and completely different feelings. Turning volume knob while listening to Vantage L feels the same like dropping foot on accelerator of a race car - it gives goosebumps on Your skin and big smile on Your face.



vantage L
anniversary



<i>Dimensions (HxWxD) mm</i>	<i>450x1191x610</i>	<i>1281x392x553</i>	<i>1210x392x553</i>	<i>1421x460x650</i>	<i>1700x570x800</i>
<i>Weight Kgs per piece</i>	<i>75</i>	<i>50</i>	<i>55</i>	<i>75</i>	<i>120</i>
<i>Sensitivity dB</i>	<i>92</i>	<i>90</i>	<i>91</i>	<i>92</i>	<i>92</i>
<i>Recommended amplifier W</i>	<i>30-300</i>	<i>30-400</i>	<i>30-400</i>	<i>50-500</i>	<i>100-1000</i>
<i>Impedance ohms</i>	<i>4,0</i>	<i>4.0</i>	<i>4.0</i>	<i>4.0</i>	<i>4.0</i>
<i>Crossover frequency</i>	<i>200,8000Hz</i>	<i>150,8000Hz</i>	<i>50,200,8000Hz</i>	<i>50,200,8000Hz</i>	<i>50,200,6000Hz</i>
<i>Frequency response</i>	<i>30-30000Hz</i>	<i>30-30000Hz</i>	<i>26-30000Hz</i>	<i>21-30000Hz</i>	<i>18-30000Hz</i>
<i>Drivers</i>	<i>2.5cm tweeter, 2x17cm mid</i> <i>2x18cm bass</i>	<i>2.5cm tweeter, 17cm mid</i> <i>1x22cm woofer</i>	<i>2.5cm tweeter 13.5cm mid</i> <i>2x15cm bass 1x22cm woofer</i>	<i>2.5cm tweeter 17cm mid</i> <i>2x18cm bass 1x26cm woofer</i>	<i>2.5cm tweeter 19cm mid</i> <i>2x22cm bass 1x32cm woofer</i>



Vantage C



Vantage B



Vantage S



Vantage M



Vantage L

vantage
anniversary

AudioSolutions
info@audiosolutions.lt
WWW.AUDIOSOLUTIONS.LT
+37066226342

PROUDLY HANDMADE IN
LITHUANIA, EU