

# MAINZ8

USER GUIDE | POWER DISTRIBUTOR

Rev.1.2 ENG



X3 | X-TC3 | A3 | C3 | D3 | D-TC3 | D-TC3 SUPREME | D-TC GOLD SIGNATURE

## THE EQUIPMENT SHOULD BE SERVICED BY QUALIFIED SERVICE PERSONNEL

1. Read these instructions.
2. Keep these instructions.
3. Heed all warnings.
4. Follow all instructions.
5. Clean the power distributor only with a dry, lint-free cloth. For more thorough cleaning, unplug the power distributor from the mains supply and go over it lightly with a damp, lint-free cloth. Do not use any type of chemical solvents or other cleaning products for cleaning.
6. Do not install near any heat sources such as radiators, heat registers, stoves, or other apparatus that produce heat.
7. Protect the power cord from being walked on or pinched particularly at plugs, convenience receptacles, and the point where they exit from the apparatus.
8. Unplug this apparatus during lightning storms or when unused for long periods of time.
9. Do not defeat the safety purpose of the polarized or grounding-type plug.
10. Only place apparatus horizontally and on a suitable table or rack. If more components are stacked. Make sure to secure sufficient of space for cooling.
11. Refer all servicing to qualified service personnel.
12. Servicing is required when the apparatus has been damaged in any way, such as when the power-supply cord or plug is damaged, liquid has been spilled or objects have fallen into the apparatus, the apparatus has been exposed to rain or moisture, does not operate normally, or has been dropped.
13. **WARNING** – Take care that objects do not fall and liquids are not spilled into the enclosure through any openings. The equipment shall not be exposed to dripping or splashing. Liquid-filled objects such as vases should not be placed on the equipment.
14. The equipment has been designed for use in moderate climates and in domestic situations.
15. Only connect the equipment to a power supply of the type described in the operating instructions or as marked on the equipment. The primary method of isolating the equipment from the mains supply is to remove the mains plug. The equipment must be installed in a manner that makes disconnection possible.
16. If an abnormal smell or smoke is detected from the equipment, turn the power off immediately and unplug the equipment from the wall outlet. Contact your dealer and do not reconnect the equipment.
17. The equipment should be serviced by qualified service personnel



Mainz8 must be connected to the building network with a fuse rated according to the max current of the power distributor: 10 A, 15 A, 16 A, 20 A

### MAX CURRENT:

EU: 10 / 16 A (acc. to the prefuse in the building network)  
US: 15 / 20 A (acc. to the prefuse in the building network)

The power cord must comply with local safety regulations.  
The device must be connected to a grounded outlet.



Electrical and electronic equipment, parts and batteries marked with this symbol must not be disposed of with normal household waste, it must be collected and disposed of separately to protect the environment. Your Anszu retailer will advise you of the correct way of disposal in your country.



Anszu Acoustics products are in compliance with Directive 2006/95/EU.



## CONGRATULATIONS

Congratulations on your selection of the exceptional Ansuz Mainz8 power distributor! We extend our heartfelt appreciation for choosing Ansuz, a pinnacle in audio engineering, granting you an exclusive entry into a realm of unparalleled musical performance.

Crafted with precision in Denmark, the Ansuz Mainz8 power distributor is not just an accessory; it's a commitment to a clean and pristine power supply for every element of your audio system. Designed with Ansuz's groundbreaking advancements in noise reduction and resonance control, this power distributor stands at the forefront of innovation.

Prepare for an exceptional and emotionally satisfying encounter with the Ansuz Mainz8 power distributor, as it elevates your audio journey with unparalleled precision and purity.

## CONTENTS

---

**4** ABOUT MAINZ8

**6** BURNING IN

**5** BACK-PANEL CONNECTIONS

**7** SPECIFICATIONS

## ABOUT MAINZ8

### Clean power supply

Ansuz Mainz8 power distributors have been developed with the aim of providing a very clean power supply for all hi-fi components of your audio system.

Equipped with the most advanced Ansuz audio technologies, the Mainz8 power distributors offer the a low grounding impedance, ensuring that virtually no noise is transmitted from the power distributor to the individual power cables feeding the individual hi-fi components. The extreme purity of the power supply paves the way for an unadulterated naturalness and lightness of music.

### Ansuz Star Grounding Technology

Voltage carries disturbing noise that has negative effects on the electronics of audio components. Ansuz Star Grounding technology prevents this noise from 'bleeding' into the electronics of all audio components connected to the Mainz8 power distributor. Ansuz Star Grounding technology is built around a well-defined area, called the star point, within the power distributor that has the lowest possible grounding impedance.

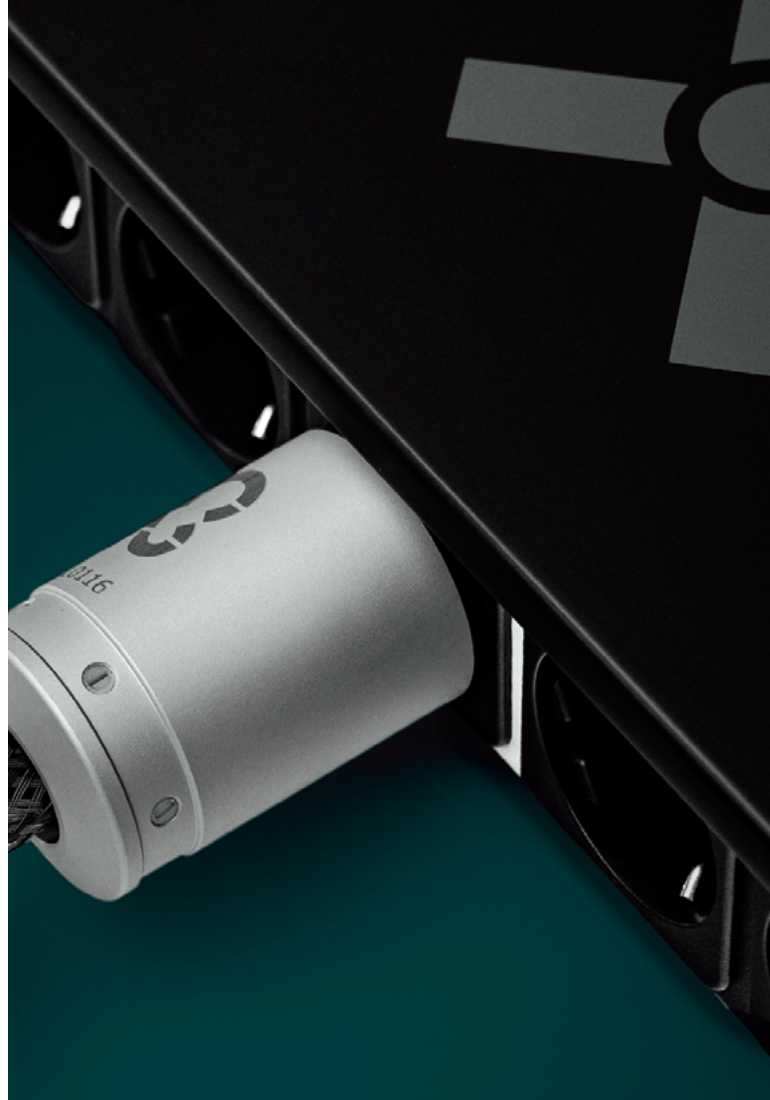
It ensures that no voltage is transferred from the power distributor to the power cables of the individual audio components. Since this star point has the

best grounding impedance, all sockets in the power distributor are grounded from here. The system can be further optimized by the use of Ansuz Mainz Power cables. They complement the power distributor with a strong grounding conductor and various shielding and interference suppression technologies.

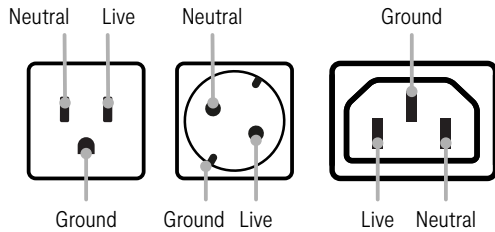
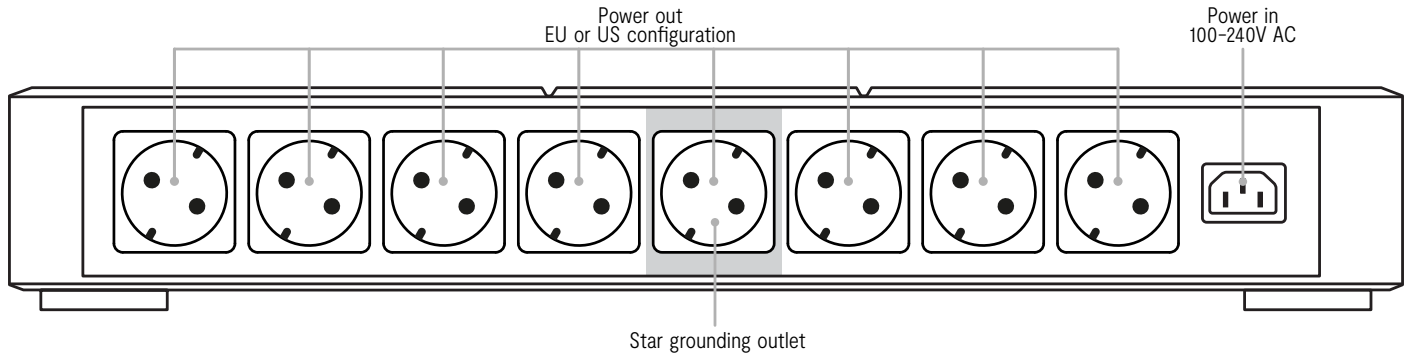
### The Tesla coil technology

The main operating principle of the Ansuz Tesla coil is that two coils are wound in opposite directions - one coil and one counter coil. In Ansuz's words, this is called a "double inverted coil." The two coils both carry voltage, and when one of the Tesla coils encounters a voltage spike, a counter coil is activated to eliminate the noise.

Since these noise spikes are pure voltage carrying virtually no charge, the cancellation is quite good, but not perfect. Connecting more Tesla coils in parallel will further enhance this noise cancelling effect. The perceived blackness in the music becomes much more palpable, as does the purity and clarity of the sound. Different types of Tesla coils are used in the Ansuz Mainz8 power distributor, as their individual properties ideally complement and reinforce each other.



# BACK-PANEL CONNECTIONS



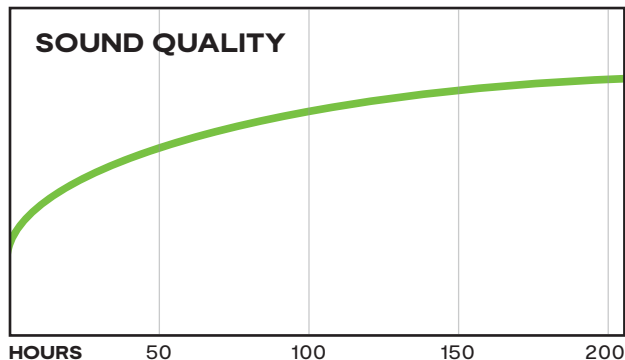
## STAR GROUNDING OUTLET

There are 8 power outlets – one of these is highlighted. This one is the star grounding point in which all components can exchange their different ground potential. We recommend that you connect your Amplifier or preamplifier to this socket.

## BURNING IN

Your new Anszuz product performs at a high level from the very first time you connect it to your music system. It does not need a burn-in period to give you the performance you can rightfully expect when investing in an exclusive High-End product.

However, during 100–200 hours of use, the product will slowly evolve its performance to its peak.



## RECOMMENDED UPGRADES

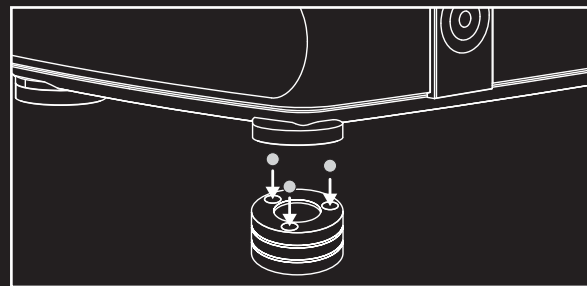
To utilize the full potential of your Mainz8, we recommend that you observe the following advice:

### Star grounding

To create the best grounding network for your audio system, we strongly recommend the use of Anszuz power cables. These cables are equipped with very strong ground leads to take full advantage of the star grounding circuit in the Power Distributor.

### Resonance control

Ensure that the Power Distributor always receives a stable mechanical grounding. This is best achieved by placing the device on a separate shelf of a high-quality audio rack. For maximum performance, we recommend placing the Power Distributor on Anszuz Darkz resonance control devices.



Explore our entire product range at  
**AUDIOWORKS.DENMARK.COM**

## SPECIFICATIONS

	<b>DIMENSIONS (L x W x H)</b>	<b>WEIGHT</b>	<b>POWER</b>	<b>MAX CURRENT</b>
<b>X3</b>	459x150x83 mm 18,1x5,9x3,3 Inches	2,6 kg 5,7 lb	230V AC IP 55	EU: 10 / 16 A (acc. to the prefuse in the building network) US: 15 / 20 A (acc. to the prefuse in the building network)
<b>X-TC3</b>	459x150x83 mm 18,1x5,9x3,3 Inches	2,7 kg 5,9 lb	230V AC IP 55	EU: 10 / 16 A (acc. to the prefuse in the building network) US: 15 / 20 A (acc. to the prefuse in the building network)
<b>A3</b>	500x263x91 mm 19,7x10,4x3,6 Inches	5,2 kg 11,5 lb	230V AC IP 55	EU: 10 / 16 A (acc. to the prefuse in the building network) US: 15 / 20 A (acc. to the prefuse in the building network)
<b>C3</b>	500x263x91 mm 19,7x10,4x3,6 Inches	5,3 kg 11,7 lb	230V AC IP 55	EU: 10 / 16 A (acc. to the prefuse in the building network) US: 15 / 20 A (acc. to the prefuse in the building network)
<b>D3</b>	500x263x91 mm 19,7x10,4x3,6 Inches	5,4 kg 11,9 lb	230V AC IP 55	EU: 10 / 16 A (acc. to the prefuse in the building network) US: 15 / 20 A (acc. to the prefuse in the building network)
<b>D-TC3</b>	500x298x98 mm 19,7x11,7x3,9 Inches	7,5 kg 16,5 lb	230V AC IP 55	EU: 10 / 16 A (acc. to the prefuse in the building network) US: 15 / 20 A (acc. to the prefuse in the building network)
<b>D-TC3 SUPREME</b>	509x313x125 mm 20,0x12,3x4,9 Inches	8,1 kg 17,8 lb	230V AC IP 55	EU: 10 / 16 A (acc. to the prefuse in the building network) US: 15 / 20 A (acc. to the prefuse in the building network)
<b>D-TC GOLD SIGNATURE</b>	509x313x125 mm 20,0x12,3x4,9 Inches	8,5 kg 18,7 lb	230V AC IP 55	EU: 10 / 16 A (acc. to the prefuse in the building network) US: 15 / 20 A (acc. to the prefuse in the building network)



We would love to hear about your experience with this product.  
Don't hesitate to contact us with feedback or questions.

[info@audiogrupdenmark.com](mailto:info@audiogrupdenmark.com)

**AUDIOGRUPDENMARK.COM**

