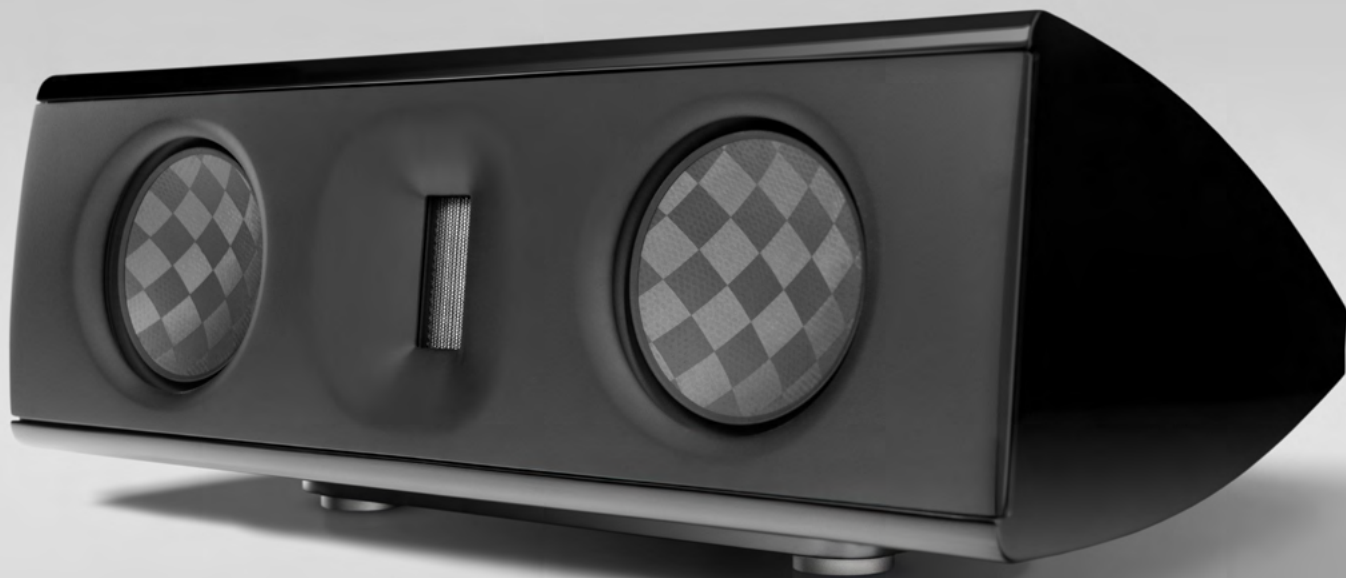


BØRRESEN CENTER3

USER GUIDE

Rev.1.1 ENG



Contents

- 4 ABOUT THE PRODUCT
- 6 UNPACKING
- 7 CONNECTING THE SPEAKER
- 8 POSITIONING
- 8 BURN IN
- 9 SPECIFICATIONS

Safety instructions

Avoid bringing external metal objects close to the loudspeaker. The tweeter contains very strong magnets and close contact with metal objects can cause damage.

The loudspeakers may be damaged due to distorted output signals from too weak, defective or overloaded amplifiers. Use only high quality amplifiers and run these within the specified power ratings.

Let the speaker reach room temperature before plugging it in. Condensation may arise in the electronic circuitry when moving the speaker from cold to warm surroundings. Such moisture may damage the speaker's components.

To protect the surface, please wear protective gloves when handling the loudspeaker.

Never use the product in damp settings. Foreign bodies must not be inserted into the bass reflex ports of the speaker. Avoid touching the speaker elements.

Maintenance:

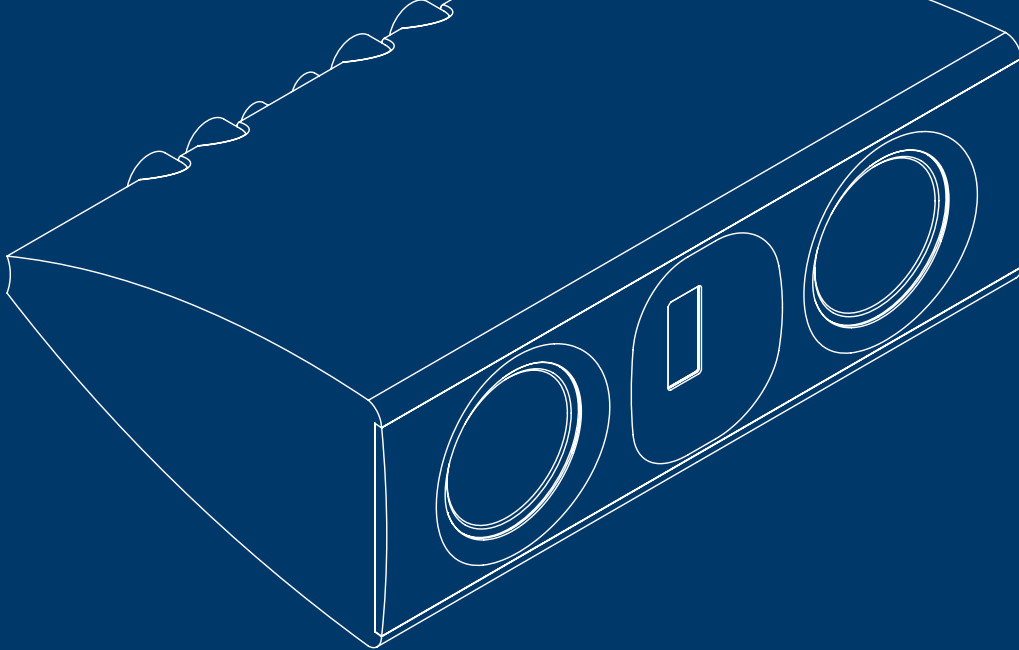
Do not use a vacuum cleaner to remove dust from the loudspeakers elements. Brush it away gently with a soft brush.

Do not use any detergent. It may discolor the finish.

Clean the surface of the loudspeakers with a firmly wrung, damp cloth.

Do not expose the cabinets to direct sunlight.





Congratulations

The Børresen audio engineering team are grateful and congratulates you for your choice of the Børresen loudspeaker. We are convinced that you will enjoy the exquisite music experience just as intimate and close as it was originally performed by the artist themselves.

Børresen Acoustics' philosophy is to bring music and movies closer to people by creating access to great, authentic and emotional experiences. Børresen believes that everyone deserves these kinds of wonderful moments. The Børresen Center3 has been designed on the solid foundation of Børresen Acoustics' development traditions, design philosophy and technological know-how.

About the product

Børresen DCC5 Neo driver

Michael Børresen and his team of experts were able to leverage the cutting-edge technology and development process of the Børresen Center3 membrane. This exclusive membrane was engineered to achieve unparalleled stiffness while minimizing noise. To meet the stringent technological demands for exceptional high-end membrane performance, it was imperative to create, develop and assemble all components in-house.

The membrane consists of three layers laminated into a single unit: two layers of spread-tow carbon fiber, with a layer of honeycomb spacers in between. The combination of these materials gives this membrane its unique properties. The spread-tow carbon fiber was designed to provide a skin with optimal stiffness. This unique feature of the membrane reduces sound-disturbing vibrations and resonances to unprecedented levels.

The magnetic motor system

Børresen uses double copper caps on the pole rings of the magnet motor system to achieve a balance between high flux and low inductance. The use of these double copper caps was adopted from higher profiled Børresen drivers. Copper responds to flux variations, and the effectiveness of these copper rings determines the steepness of the inductance curve and the extent to which electromagnetic resonance is reduced. Consequently, lower inductance results in fewer spikes on the impedance curve, which ultimately reduces the load on the amplifier.

To achieve optimum efficiency, the DCC5 Neo driver has two pole rings, which inevitably results in some flux loss and thus, lower efficiency. However, this drawback is compensated by using stronger magnets made from N52 Neodymium – the strongest magnetic material available.



About the product

Børresen RP94 tweeter

Another fundamental element of the Børresen DNA, and thus a natural addition in the Center3, is the Børresen ribbon planar tweeter. The efficiency of this ribbon planar tweeter is an exceptional 94 dB and operates from about 2.5 kHz upwards. The moving mass is extremely low at 0.01 grams. The fully ventilated tweeter has the ability to operate at incredible speed, which is an absolute prerequisite for unlocking the subtlest and finest sonic details of any type of music.

The tremendous robustness of this tweeter allows it to handle extremely high transient peaks without causing any ear deafening breakups. Elaborate finite element methods were used to linearize and optimize the magnetic flux field, facilitate driver movement, and ensure high efficiency and excellent linearity.

Crossover

The Børresen Center3 is equipped with a parallel crossover built with high-quality components. This makes for a very mechanically stable crossover that minimizes its self-resonance.

The cabinet

The surface of the cabinet of the speaker is finished in an elegant black high gloss lacquer. The cabinet itself is made of a robust wood composite material that has been carefully reinforced to effectively eliminate sound distortion. In addition, this material minimizes the impact of mechanical factors, particularly hysteresis. The result is a significant improvement in sound performance.



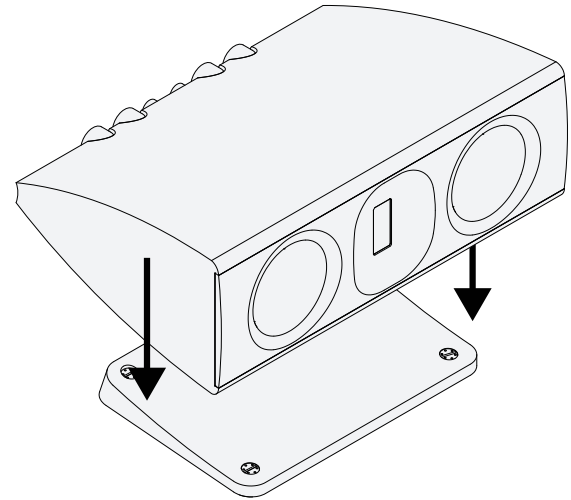
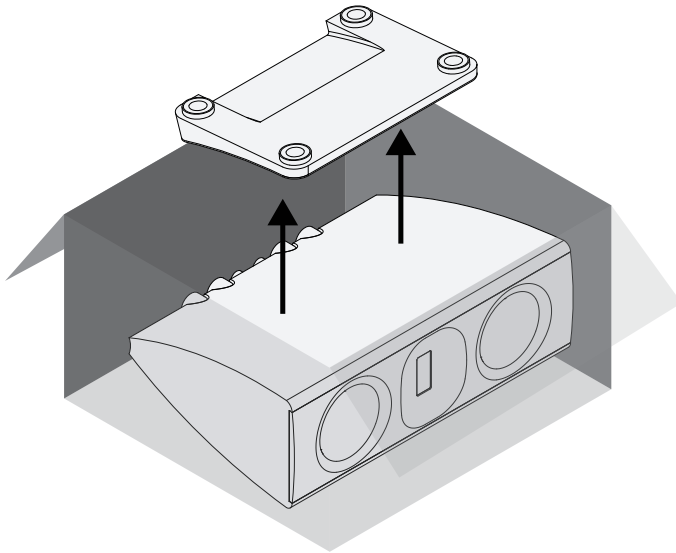
Unpacking

Børresen loudspeaker models are protected during transport by stable and secure packaging.

Due to their weight and dimensions, they are shipped in double layer box.

1. Carefully lay the box flat on a plane floor.
2. Open the outer and inner box. Do not use knife or sharp instruments to break the tape.
3. Put on protective gloves for further handling of the loudspeaker.
4. Remove the foot and place it with the low edge (front) facing forward.
5. Now, lift the box to an upright position.

6. Pull the loudspeaker and the protective foam out of the box, sliding it on the bottom foam. Be careful not to tilt.
7. Remove the bottom foam by tilting the loudspeaker and then the remaining foam to unpack the loudspeaker completely.
8. Carefully place the loudspeaker on the foot.
9. Please observe guidelines for positioning and connecting your loudspeakers.



Connecting the speaker

With every connection system, ensure that the contact is tight and has a proper contact area.

Connectors with gold plating will typically offer the best results and remain corrosion-free.

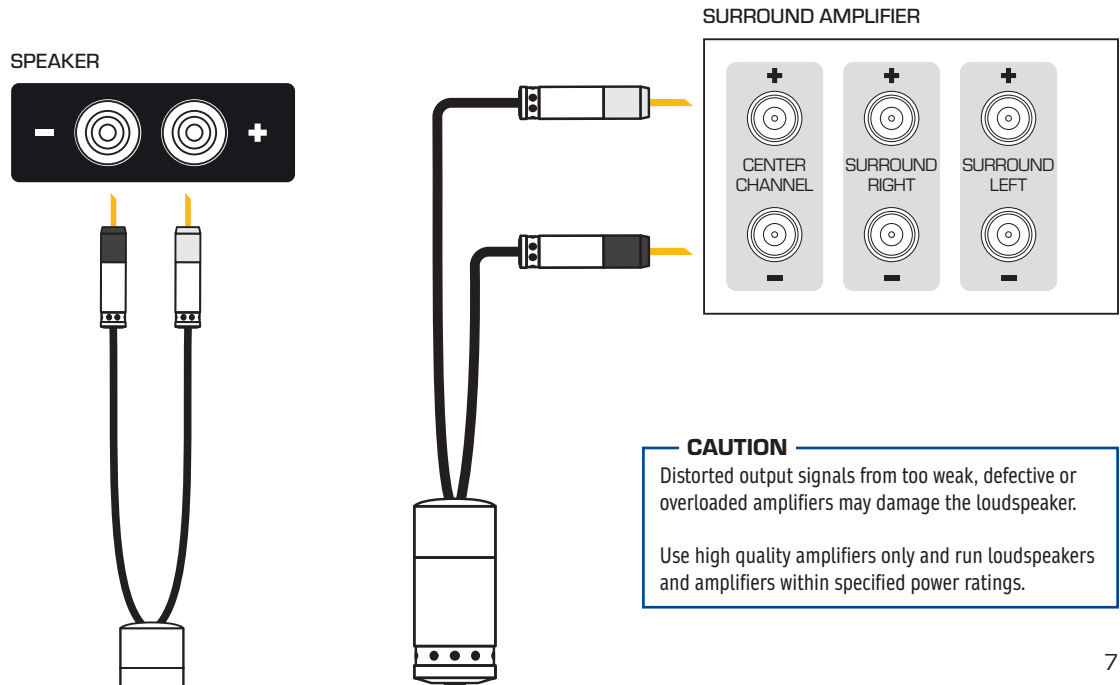
Please ensure that the positive and negative cables do not make contact with each other.

Check the connectors from time to time to make sure that nothing has loosened.

1. Connect a two-pole (+/-) loudspeaker cable to the terminals, located at rear of the loudspeaker.

The high quality binding posts can accommodate 4-mm-plugs ("banana plugs") and spades.

2. Connect the other cable ends to the loudspeaker outputs of your switched off amplifier.



CAUTION

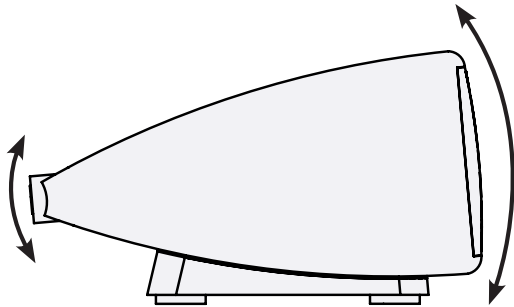
Distorted output signals from too weak, defective or overloaded amplifiers may damage the loudspeaker.

Use high quality amplifiers only and run loudspeakers and amplifiers within specified power ratings.

Positioning

The Børresen Center3 comes equipped with a dedicated plinth for seamless horizontal placement. Nestled securely in its base, the loudspeaker offers effortless adjustment of the vertical angle.

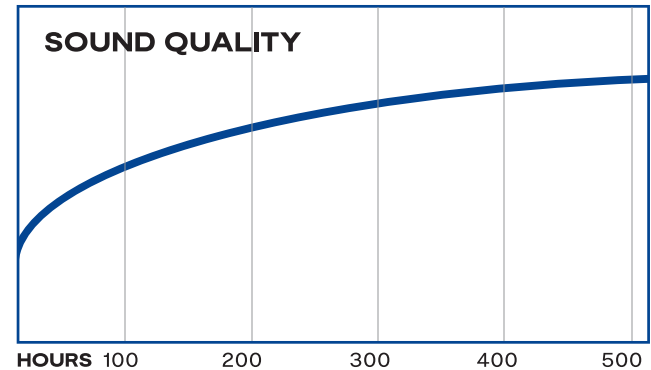
To unlock the speaker's ultimate performance potential, we recommend ensuring the Center3 is precisely aimed at the primary listening position, perfectly aligned with ear level.



Burn in

All new high quality loudspeakers need a certain period of burn in time. As Børresen loudspeakers uses long-stroke bass driver with natural rubber surrounds, the loudspeakers needs at least 50 - 100 hours of actual music playing at decent sound level.

You will notice a gradual improvement in sound quality. No particular precautions need to be taken during those hours.



Specifications

DIMENSIONS (WITH FOOT)	Height: 226 mm Width: 599 mm Depth: 400 mm Height: 8.90 in Width: 23.58 in Depth: 15.75 in
WEIGHT	Speaker: 18.75 kg Foot: 2.1 kg Speaker with foot: 20.85 kg Speaker: 41.34 lb Foot: 4.63 lb Speaker with foot: 45.97 lb
FREQUENCY RESPONSE	45Hz - 50KHz
SENSITIVITY	87 dB/1W
IMPEDANCE	8 Ohm
RECOMMENDED AMP.	> 50 W
TWEETER	1 x Børresen RP94 Ribbon Planar Tweeter
BASS/MIDRANGE DRIVERS	2 x Børresen DCC5 Neo driver
FINISH	Black high gloss lacquer





Recommended products

Ansuz loudspeaker cables

Børresen recommends using high-end Ansuz speaker cables with the speaker. These cables are designed to deliver pure signal flow, reducing resistance, induction, and noise floor for an authentic soundstage. As Børresen speakers and Ansuz cables are developed and designed by the same team, they share the same DNA and a unique synergy that ensures a seamless and exceptional sound reproduction experience.

Ansuz Darkz resonance control

The Center3 foot is prepared for using the Ansuz Darkz resonance control devices. Ansuz Darkz absorb vibrations that are not directly related to the signal path. The absorption results in an audible vibration feedback, which affects the sound quality. It is the natural and authentic sound that Ansuz Darkz devices are designed to preserve. There is no alteration of the authentic sound reproduction which, when using conventional grounding materials, often make the sound unnaturally cold and harsh.

Explore our entire product range at
[AUDIOGROUPDENMARK.COM](https://www.audiogroupdenmark.com)



Børresen

Support & Contact

For any questions, technical guidance, or assistance with setup and system optimization, our support team is available to help you achieve the full potential of your system.

Mail: info@audiogroupdenmark.com

audiogroupdenmark.com